

### Tracking Market

16, MAY, 2019	Close	AbsChange
GOLD	32259	18
SILVER	37517	-4
CRUDEOIL	4366	14
NATURAL GAS	184.1	-3.1
COPPER	428.8	2.45
NICKEL	856.7	16.4
LEAD	127.35	0.3
ZINC	217	3.1
ALUMINIUM	150.75	0.55
\$ / Re.	70.33	-0.12
Light Sweet Crude Oil	62.13	0.79
Gold \$ / OZ-	1297.2	-0.3
Silver \$ / OZ-	14.8	-0.75

### Commodity News

#### Energy

##### **Oil extends gains into third session amid Middle East tensions**

Oil prices edged up on Thursday to extend gains into a third straight session, as tensions in the Middle East stoked fears of potential disruptions to supply. U.S. West Texas Intermediate (WTI) crude futures were at \$62.27 per barrel

#### Bullions

##### **Gold Steady After \$1,300 Peak; U.S.-China in Focus**

Gold bugs await their next stab at \$1,300, but the veil over the U.S.-China trade talks and where that could be headed has to be lifted first. Bullion and futures of gold traded again in \$1,300 territory on Wednesday

#### Currency

##### **Euro bounces on expectations Trump will delay auto tariffs**

The euro was buoyant on Thursday as trade concerns eased on expectations that U.S. President Donald Trump will delay implementing tariffs on imported cars.

#### Base Metals

##### **Copper gains as hopes for trade deal outweigh soft Chinese data**

Copper extended its rebound on Wednesday as hopes the United States and China would forge a trade deal overshadowed largely disappointing economic data from top metals consumer China.

#### Agri Commodity

##### **Turmeric price improves**

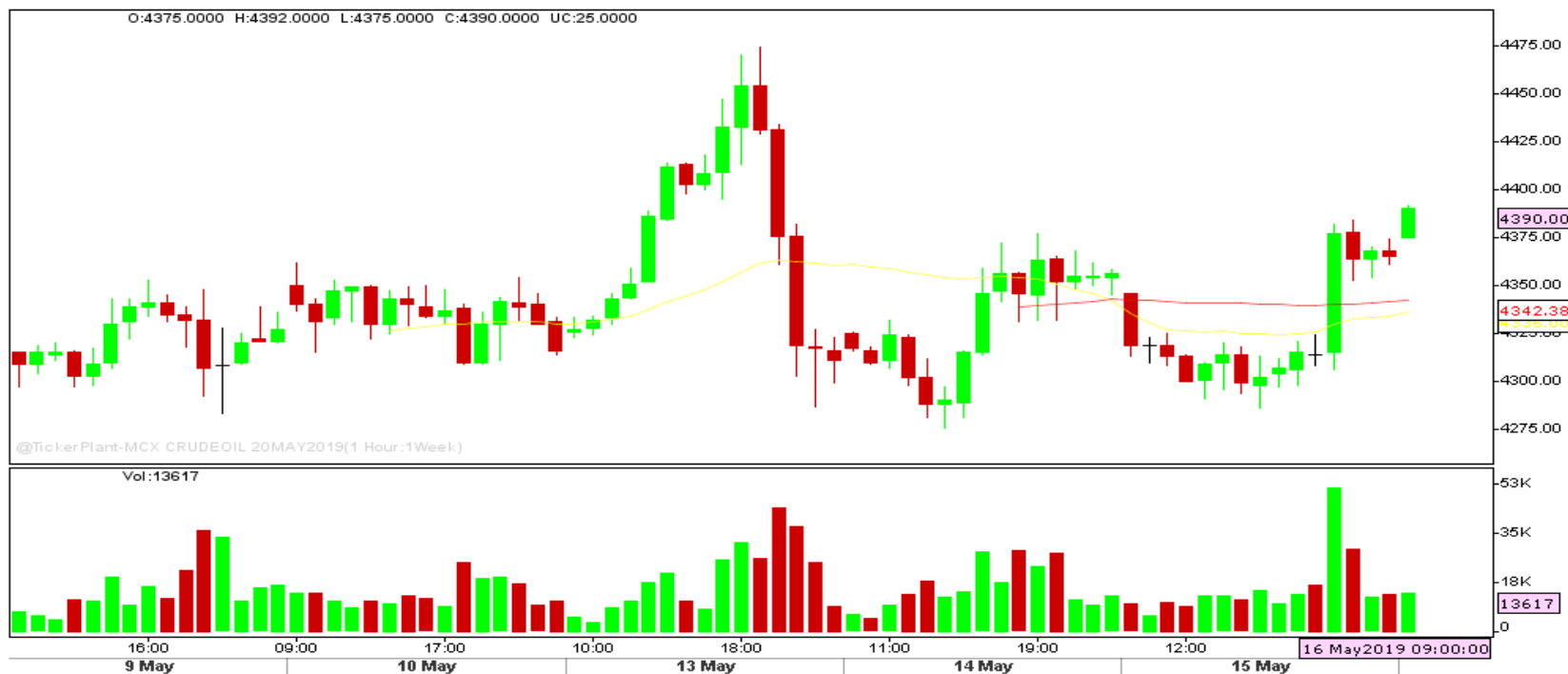
Turmeric prices rose in Erode on Monday. At the Erode Turmeric Merchants Association At the Erode Turmeric Merchants Association Sales yard, finger turmeric sold at Rs 5,894-7,301 a quintal, while the root variety sold at Rs 5,496-7,100.

## PIVOT TABLES

SCRIP	S2	S1	R1	R2	STRATEGY
GOLD	32040	32150	32350	32500	BUY ON DIPS
SILVER	36950	37200	37900	38150	BUY ON DIPS
CRUDE OIL	4260	4310	4410	4460	BUY ON DIPS
NG	178	181	188	191	BUY ON DIPS
COPPER	421	425	431	434	SELL ON RISE
NICKEL	835	845	865	875	SELL ON RISE
LEAD	124.50	126.50	128.90	131	BUY ON DIPS
ZINC	214	215.8	218.6	221	BUY ON DIPS
ALUMINIUM	147.2	149.2	152.5	153.9	SELL ON RISE

## CALL OF THE DAY

### CRUDE OIL : HOURLY CHART



**MCX CALL : BUY CRUDE OIL ABOVE 4395 TGT 4445 SL BELOW 4345**

# DISCLAIMER

The information and views in this report, our website & all the service we provide are believed to be reliable, but we do not accept any responsibility (or liability) for errors of fact or opinion. Users have the right to choose the product/s that suits them the most. Sincere efforts have been made to present the right investment perspective. The information contained herein is based on analysis and up on sources that we consider reliable.

Entering our site means that you have read, understood and agreed to everything that is written and implied in this disclaimer note. RESEARCH is published solely for informational purposes and must in no way be construed as investment advice for a specific individual. The information and views in this web-site & all the services we provide are believed to be reliable, but we do not accept any responsibility (or liability) for errors of fact or opinion. Users have the right to choose the product/s that suits them the most.

**Investment in equity shares, futures, options and commodities has its own risks.**

Sincere efforts have been made to present the right investment perspective. The information contained herein is based on analysis and on sources that we consider reliable. We, however, do not vouch for the accuracy or the completeness thereof. This material is for personal information and we are not responsible for any loss incurred due to it & take no responsibility whatsoever for any financial profits or loss which may arise from the recommendations above.



Ripples Advisory Pvt. Ltd  
AN INVESTMENT ADVISORY CO.